

VRS Approach Route Jaarbeurs P2

VRS Procedure

The Vehicle Registration System (VRS) is designed to ensure a smooth flow of vehicles during the setup and breakdown days at Jaarbeurs. Vehicles must be registered in the VRS from four weeks to 48 hours in advance. After registration, you will receive two emails: a 'Reservation E-mail' confirming the details, followed by a booking confirmation. Please print and bring the attachment from the booking confirmation. The barcode will be scanned to grant access to the loading and unloading zone.

You only need a timeslot reservation during setup and breakdown days. On exhibition days, you can report on-site and follow the instructions of the traffic controllers.

[Click here to reserve a time slot](#)

Regulations

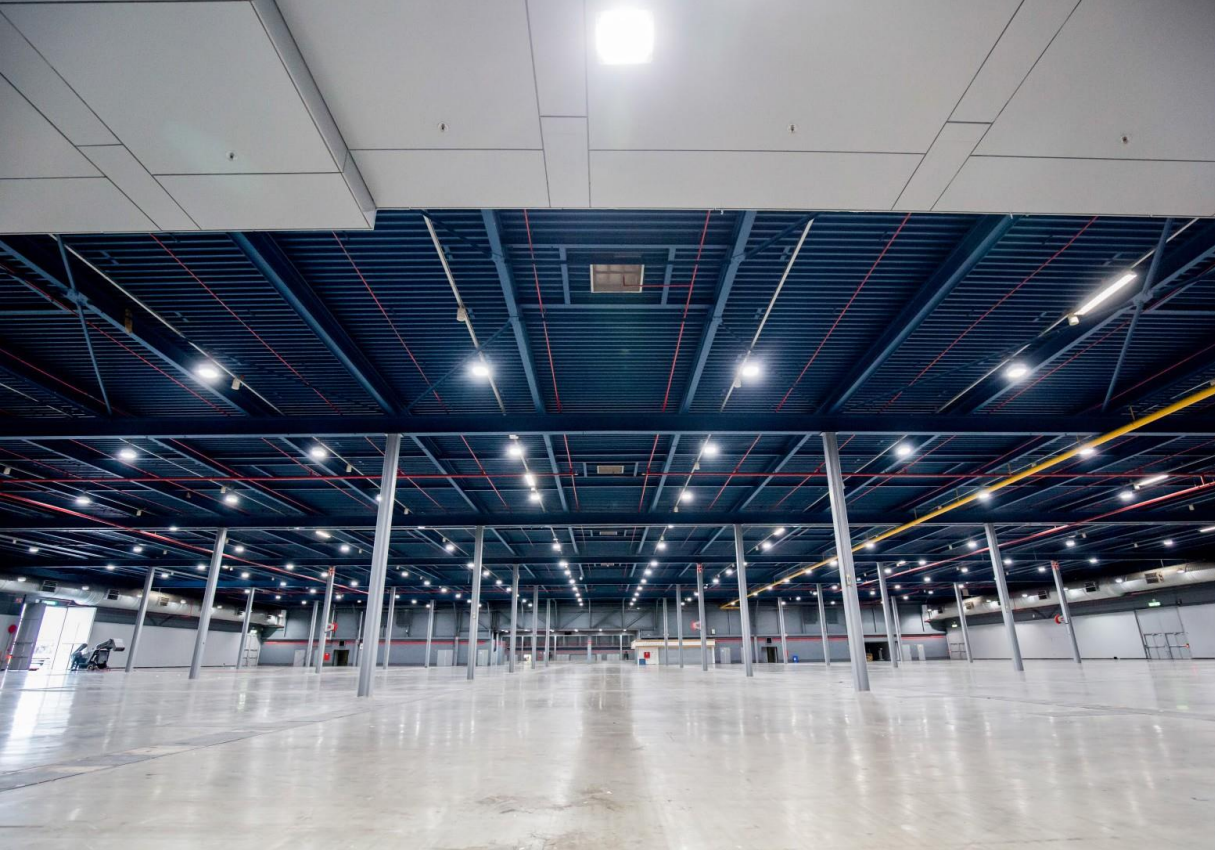
Setting up and breaking down an exhibition involves many logistical operations. To manage this efficiently, the following rules apply to the loading and unloading zone:

- During setup and breakdown days, loading/unloading is allowed between 07:00 – 23:00.
- Cars, vans, box trucks and trailers can load/unload for a maximum of 60 minutes.
- Trucks can load/unload for a maximum of 120 minutes.
- If you exceed your loading/unloading time, a surcharge of **€120,- will apply**.

* For vehicles taller than 2.70 meters, we expect unloading with a forklift, hence more than 60 minutes is allowed.

Setup and breakdown days

- During setup and breakdown days, with a reserved time slot between 07:00-19:00 uur, you can drive directly to Route Expeditie Bridge (EB) **Truus van Lierlaan, 3527 KZ Utrecht**
- After 19:00, the access route is Route 200, **Fentener van Vlissingenkade 2, 3531 AA Utrecht**
- The exception is the breakdown evening, where Route EB remains the access route after 19:00.
- Exiting after loading/unloading is done under the guidance of parking staff.
- After scanning the code for your time slot, you will draw an entry card at the barrier. The vehicle license plate and arrival time are linked to this card. The loading/unloading time starts when you draw the entry card.



Parking After Loading and Unloading

After loading and unloading, you must leave the loading and unloading zone and park your vehicle in the designated parking areas.

- Vehicles **under 2,70 meter** can be parked in P2 and P4.
- Vehicles **over 2,70 meter** can be parked in P2.

If you do not move your vehicle to the designated parking area after loading/unloading, you will not meet the timeslot deadline. This means you will have to pay a surcharge of €120,- before the barrier opens.

(Detached) trailers may not be left on the Jaarbeurs site. They will be removed and the costs will be charged.

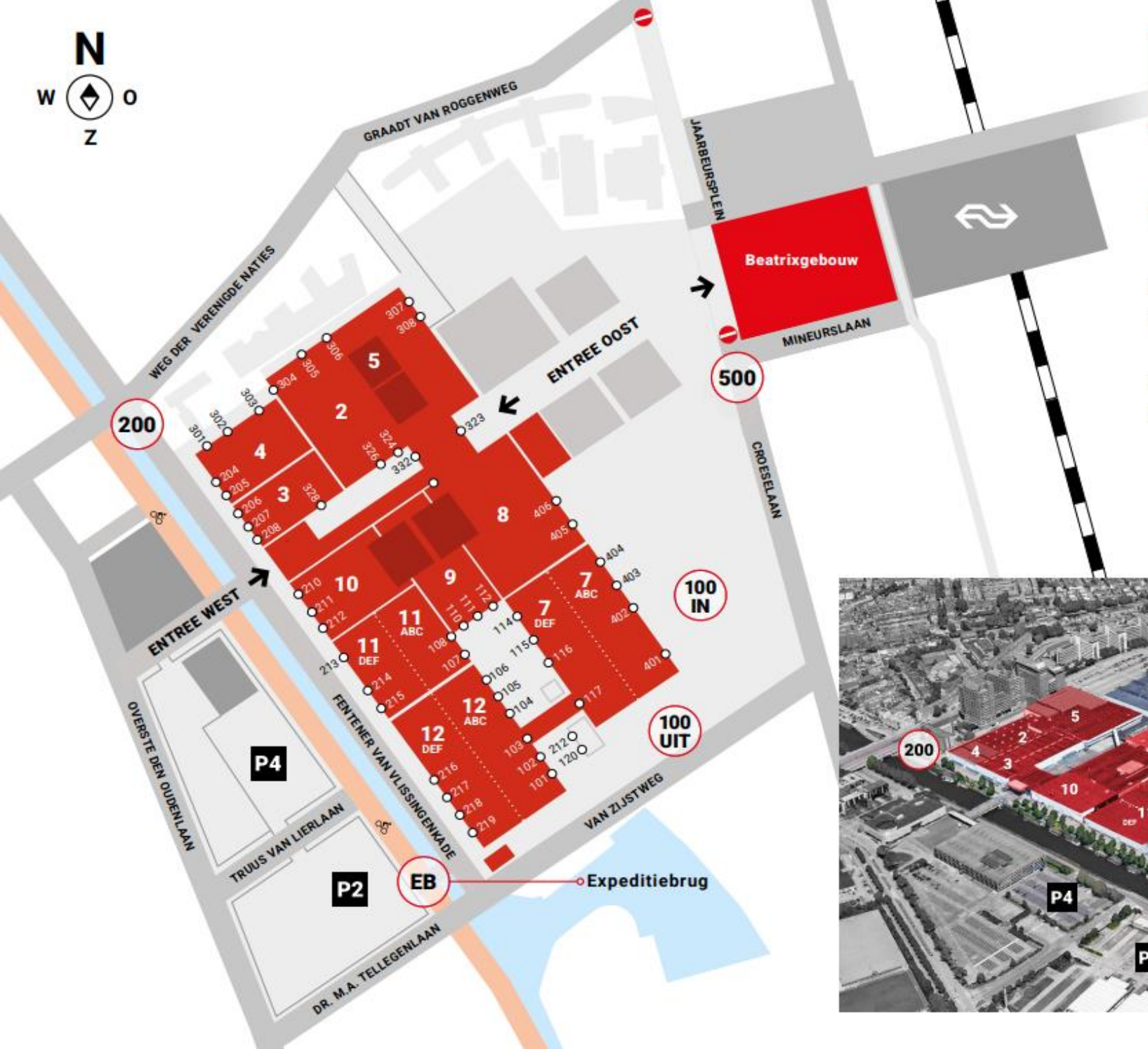
During trade fair days

The delivery route during trade fair days is Route 200, unless otherwise specified.

Dismantling evening after the trade fair

- For the first two hours after the trade fair closes, exhibitors with a exhibitors badge or wristband can load important items. No time slot is needed for this.
- Two hours after the trade fair closes, vehicles with a time slot are allowed into the loading and unloading zone for dismantling.





Navigation addresses:

Route EB:
Truus van Lierlaan, 3527 KZ Utrecht

Route 200:
Fentener van Vlissingenkade 2, 3521 AA Utrecht

